



MACHINE TOOLS EQUIPMENTS

193.1

BOHREINRICHTUNG MONTIERT AUF SEITENSCHLITTEN

D

UNITÀ FORATURA SPECIALE

I

DRILLING UNIT FOR CROSS SLIDES

GB/USA

UNITÉ A PERCER TRANSVERSAL

F

UNIDAD PERFORACION

S

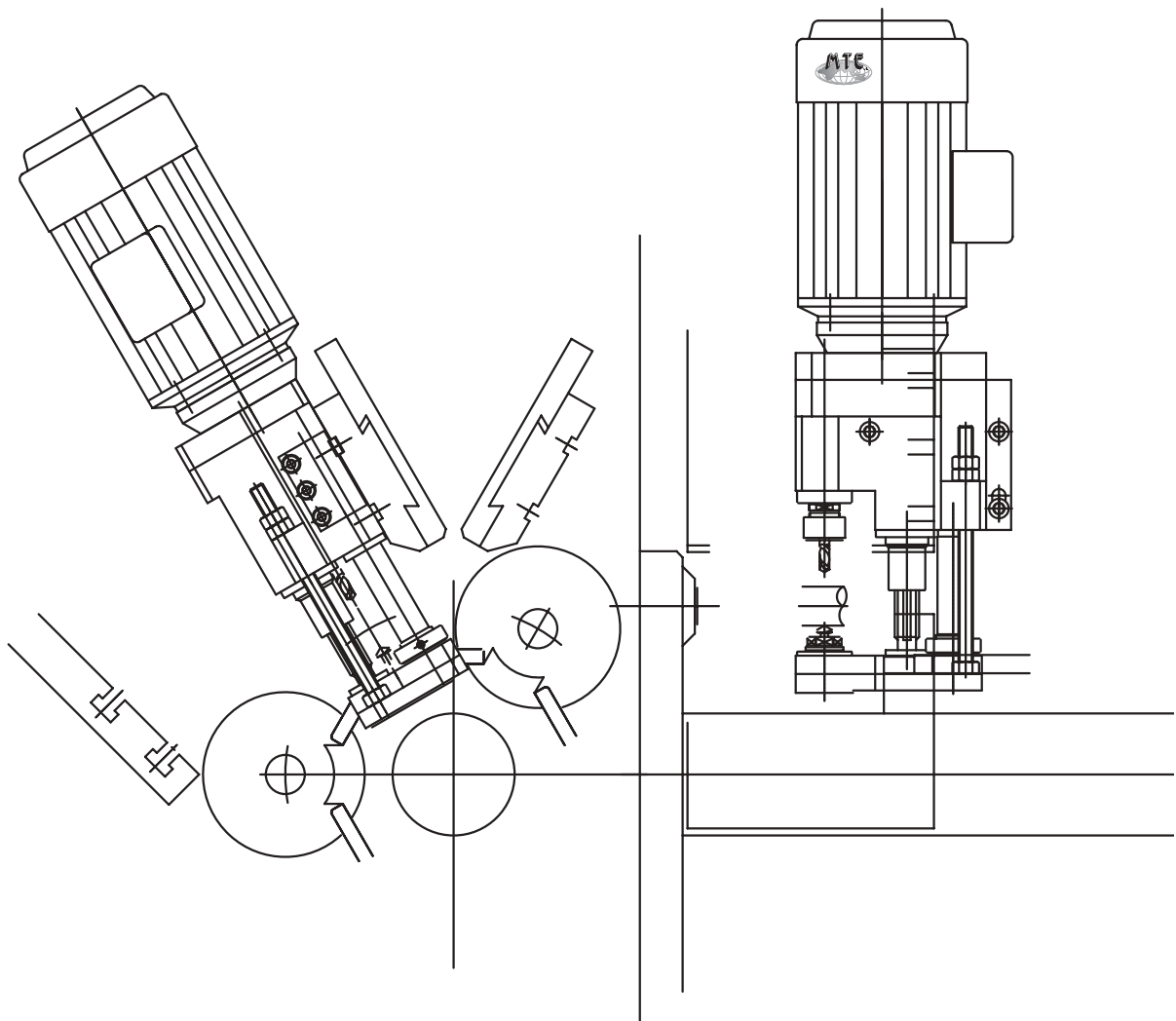


TABELLA PAGINA SEGUENTE

TABLE NEXT PAGE

A RICHIESTA PER ALTRI TIPI DI MACCHINA - ON REQUEST FOR OTHER TYPES OF MACHINE



MACHINE TOOLS EQUIPMENTS

193.1

BOHREINRICHTUNG MONTIERT AUF SEITENSCHLITTEN

D

UNITÀ FORATURA SPECIALE

I

DRILLING UNIT FOR CROSS SLIDES

GB/USA

UNITÉ A PERCER TRANSVERSAL

F

UNIDAD PERFORACION

S

**A RICHIESTA ALTRE ATTREZZATURE/FURTHER EQUIPMENTS ON REQUEST**

ARTICOLO ARTICLE	MACCHINA MACHINE
---------------------	---------------------

**WICKMAN**

193.10.10	5/8"
193.17.10	7/8" - 5 M
193.19.10	1" 3/4 - 5 M
193.20.10	1"
193.29.10	32 - 8
193.30.10	1" 3/4-3/8
193.38.10	1" 3/8 - 5 M
193.40.10	2" 1/4
193.41.10	2" 5/8
193.50.10	3" 1/2
193.58.10	3" 1/4

**GILDEMEISTER**

193.09.10	AS 12
193.11.10	AS 16 - GM 16
193.15.10	AS 20 - GS 20 - GM 20
193.18.10	AS 22 - AS 25
193.27.10	AA 32
193.31.10	AS 32
193.32.10	AS 40 - AS 48
193.36.10	AA 48
193.44.10	AS 55 - 67
193.47.10	GM 35 - GM 42
193.51.10	AA 67
193.56.10	GM 32
193.63.10	AS 63
193.69.10	GS 50 - 51
193.70.10	GM 26
193.82.10	AS 82
193.83.10	AS 100

**MORI SAY - EUROTURN**

193.14.10	6/20
193.24.10	6/25 - 6/32
193.28.10	6/42
193.53.10	8/32
193.67.10	8/42

**INDEX**

193.13.10	MS 25
193.34.10	KS 25
193.35.10	KS 42
193.60.10	KS 18
193.61.10	KS 32
193.62.10	KS 50

ARTICOLO ARTICLE	MACCHINA MACHINE
---------------------	---------------------

**SCHÜTTE**

193.08.10	SF 13
193.21.10	SE 16 - SF 20
193.22.10	SE 25
193.23.10	SF 40 - SF 42
193.33.10	SD 25 - SD 32
193.42.10	SD 50
193.43.10	SD 63 - SD 80
193.46.10	SF 26 - SF 32
193.48.10	AD 40
193.49.10	SF 51
193.54.10	SF 67
193.55.10	SF 26 L
193.73.10	AG 20
193.81.10	SF 81
193.84.10	AF 42/51
193.85.10	AF 26/32

**PITTLER**

193.25.10	PRB 8/25
193.26.10	PRB 8/32 - PRC 6/32
193.37.10	DAM 6/50
193.39.10	DAM 8/32
193.45.10	PRB 6/50 - PRC 6/50
193.52.10	PRB 36/6
193.64.10	PRC 36/6
193.65.10	DAM 6/32
193.71.10	PRC 100/4-72/6-50/8

**BSA**

193.59.10	2"
193.68.10	2" 1/4

**ACME GRIDLEY**

193.12.10	16 m/m
193.57.10	1" 1/4 - 6 M
193.74.10	1" 5/8

**TOS / AN**

193.88.10	6/25 A
193.89.10	6/40 A
193.90.10	6/63 A

**NEW BRITAIN**

193.91.10	52
193.96.10	62

**A RICHIESTA PER ALTRI TIPI DI MACCHINA - ON REQUEST FOR OTHER TYPES OF MACHINE**